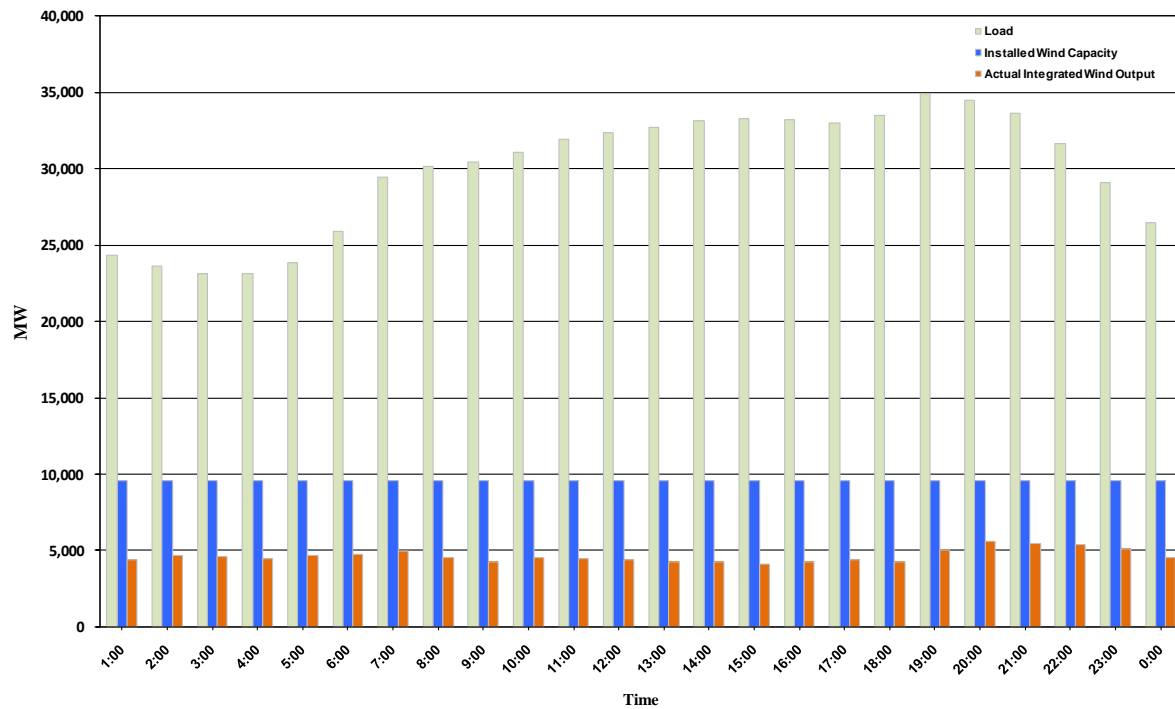




## ERCOT Grid Operations Wind Integration Report: 11/09/10

Peak Load	<b>34,934 MW</b>
Load Peak Hour	<b>19</b>
Wind Record 06/12/10	<b>7016 MW</b>
Max Wind value	<b>5838 MW</b>
Wind Peak Hour	<b>19:54:20</b>
Wind Integration %	<b>17.02</b>

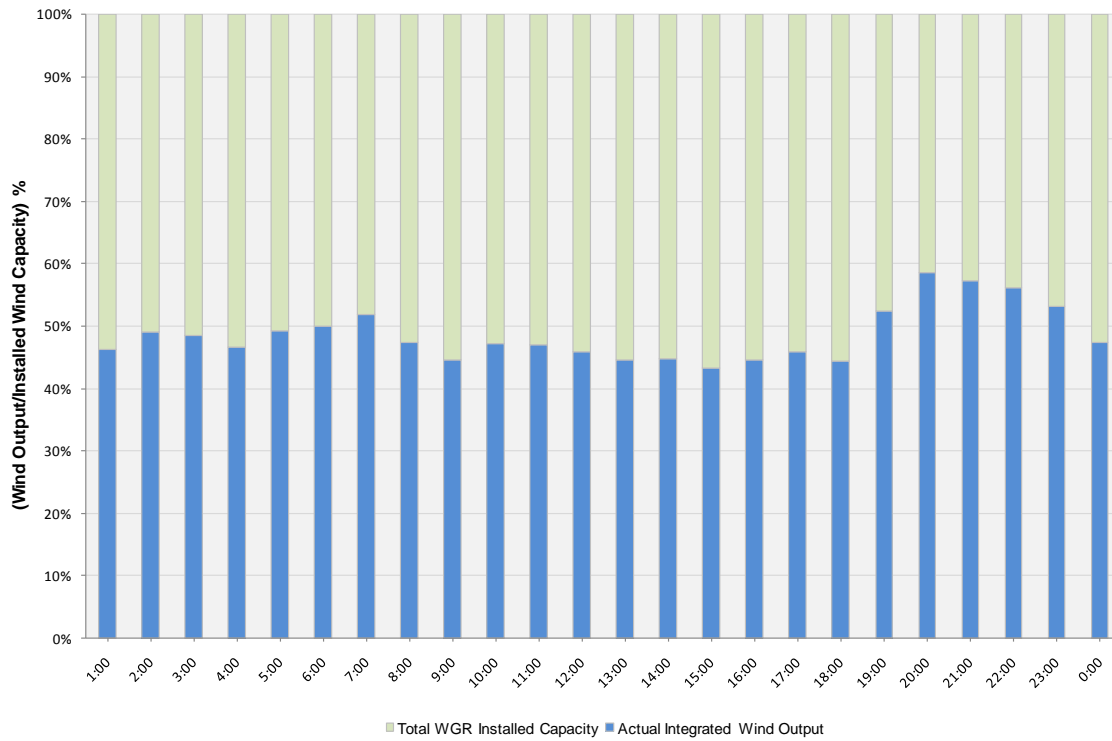
Hourly Average Actual Load vs. Actual Wind Output  
11-09-2010





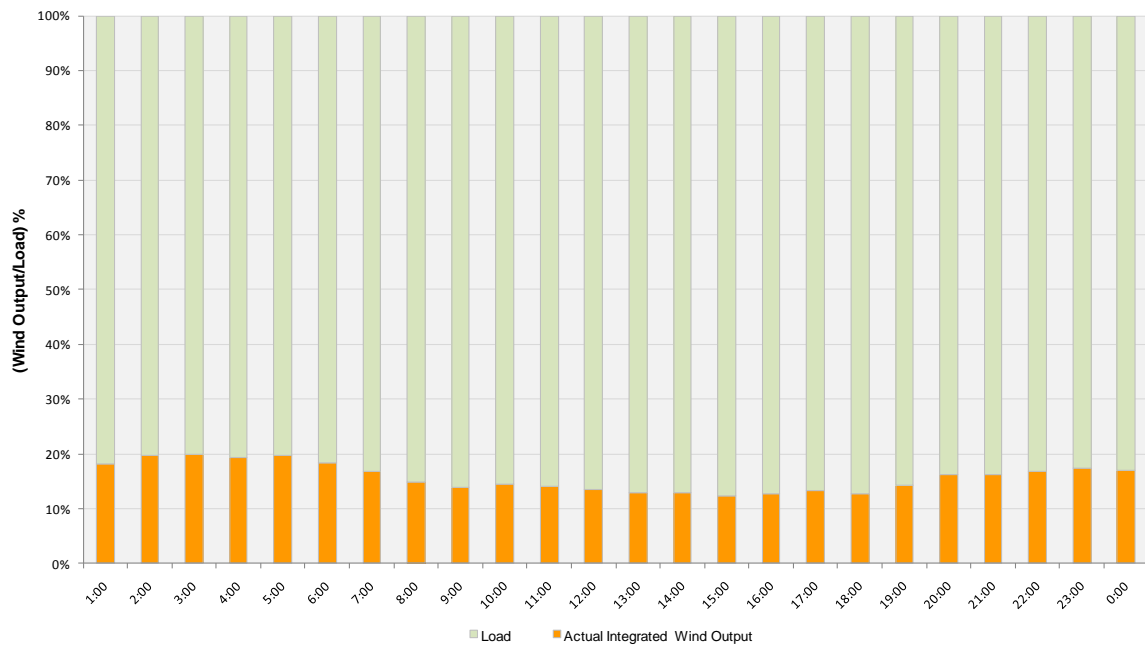
### Actual Wind Output as a Percentage of the Total Installed Wind Capacity

11-09-2010



### Actual Wind Output as a Percentage of the ERCOT Load

11-09-2010





ERCOT Load vs. Actual Wind Output 11/02/10 - 11/09/10

